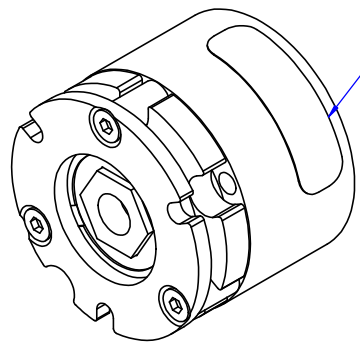
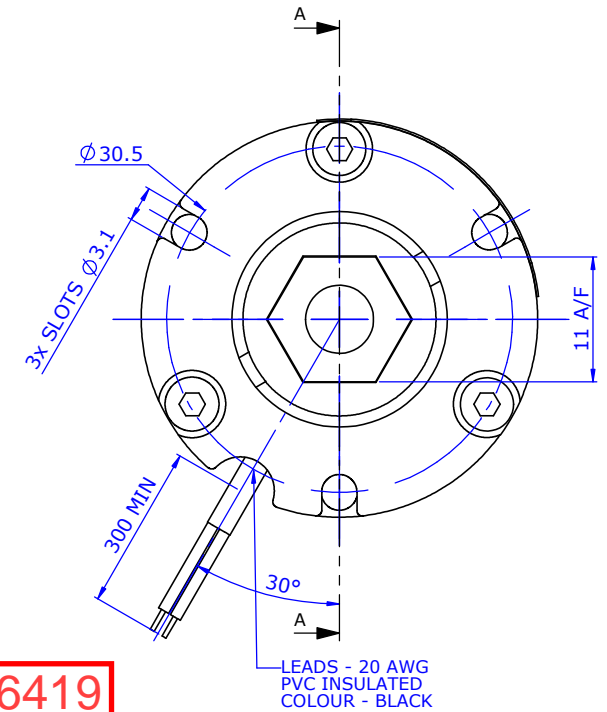
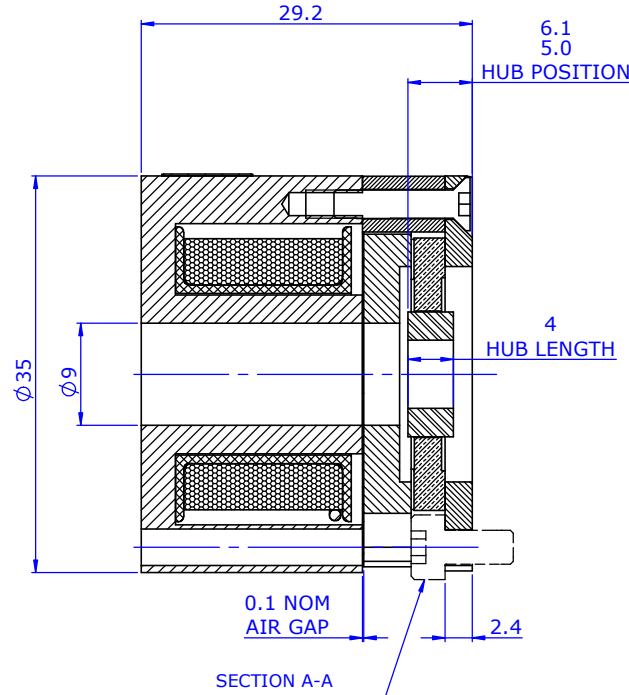
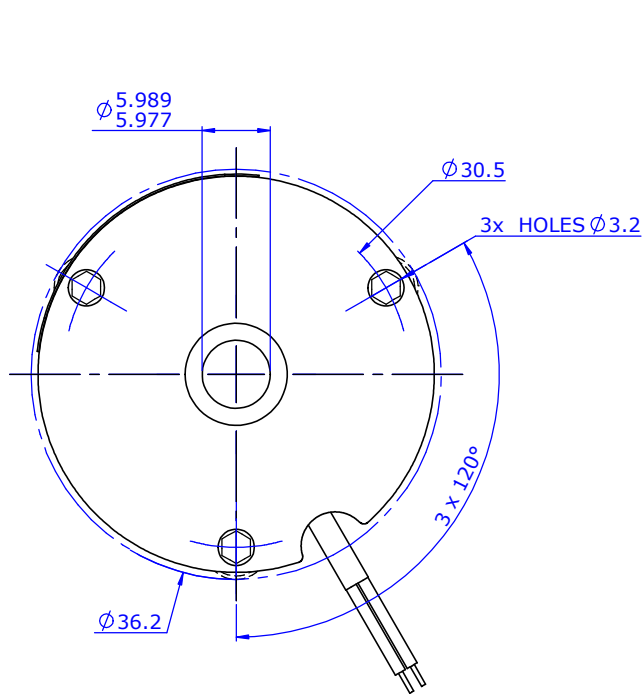


# Presspassung für Welle 6k5 (6R7)

SAP No :



**LABEL EXAMPLE**  
 SERIAL No/DATE CODE & CUSTOMER REF  
 PART No & ISSUE LEVEL  
 VOLTAGE & POWER



0001-10/19 :  
 WR221A11P1 : iss B  
 12 V : 6W

APPROVED BY :

DATE :

SIGNATURE :

POSITION :

COMPANY :

**KAG-ID: 436419**  
**KV69984**  
**AW, 07.12.20**

## BRAKE SPECIFICATION :

STATIC TORQUE (DRY)	= 0.35 Nm MINIMUM
OPERATING VOLTAGE	= 12 Vdc ± 10%
POWER CONSUMPTION (AT 20°C)	= 6.0 WATTS ± 7%
COIL RESISTANCE (AT 20°C)	= 24.4 OHMS ± 7%
ELECTRICAL INSULATION	= CLASS 'F'
RELEASE VOLTAGE (AT 20°C)	= 9 Vdc MAXIMUM
RE-ENGAGE VOLTAGE (AT 20°C)	= 0.25 Vdc MINIMUM

1. DIMENSIONS IN MILLIMETRES (mm).
2. UNTOLERANCED DIMENSIONS ARE NOMINAL DIMENSIONS
3. ANGLES REFERENCE ONLY.



B	-	HUB WAS 05 WITH SET SCREW			AB	02/12/20	
A	-	INITIAL PROPOSAL			AB	17/10/19	
ISSUE	MOD No.	MODIFICATION			ENG	CKD	DATE
ED		DRAWING NUMBER				ISSUE	
-	A2	I-WR221A11P1				B	