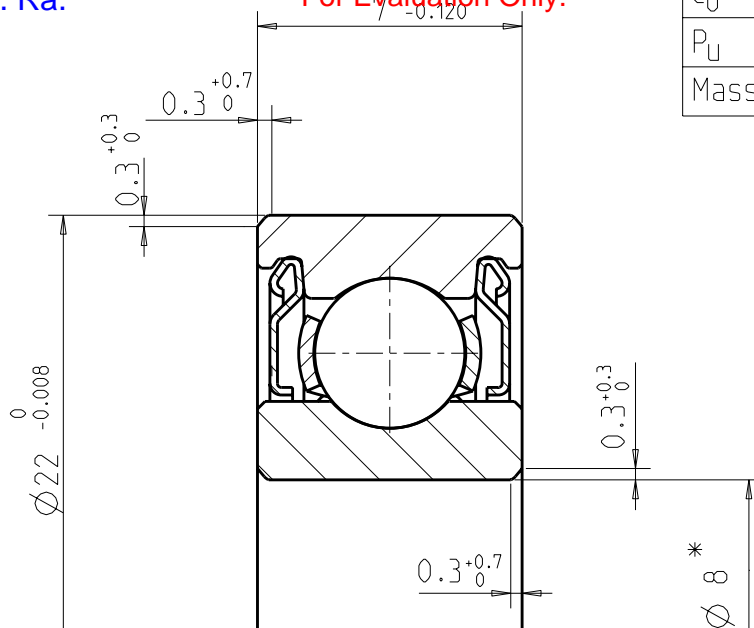


Erstmalig am 24.10.2010 als Zeichnung für 490137 von SKF erhalten. Ra.

Edited by Foxit Reader  
Copyright © by Foxit Corporation, 2005-2009  
For Evaluation Only.

C	=	3250 N
C <sub>0</sub>	=	1370 N
P <sub>U</sub>	=	57 N
Mass	≈	0.0126 Kg



Pitch circle dia.	14.7
Size of balls	3.969
No. of balls	7
Cage type	Pressed steel
Radial clearance (CN)	0.002 min. 0.013 max.
(Without measuring load)	
Grease type	LHT23
Grease fill	25 to 35% of void
Shield material	
Steel sheet	
344448 = Special bore diameter tolerances	






1:1

\* Bore diameter tolerances according to the table below

d		Vdp	Vdmp
max	min	max	max
0	-0.004	0.004	0.0025

Tolerances in accordance with ISO 492, tolerance class 6, except \*

Edition/Year Month		1 / 05 03		2 /		3 /		4 /		5 /		6 /	
							Drawn	Checked	Approv.	R.C. 29	T.C.		
							GRASSI	Gallucci	Gallucci	Date	2005-03-18		
Scale		Deep groove ball bearing						Product Designation					
-								608-2Z/LHT23/344448					
								CAD model : CLI_608-2Z_LHT23_344448.DRW				Generated with layout	