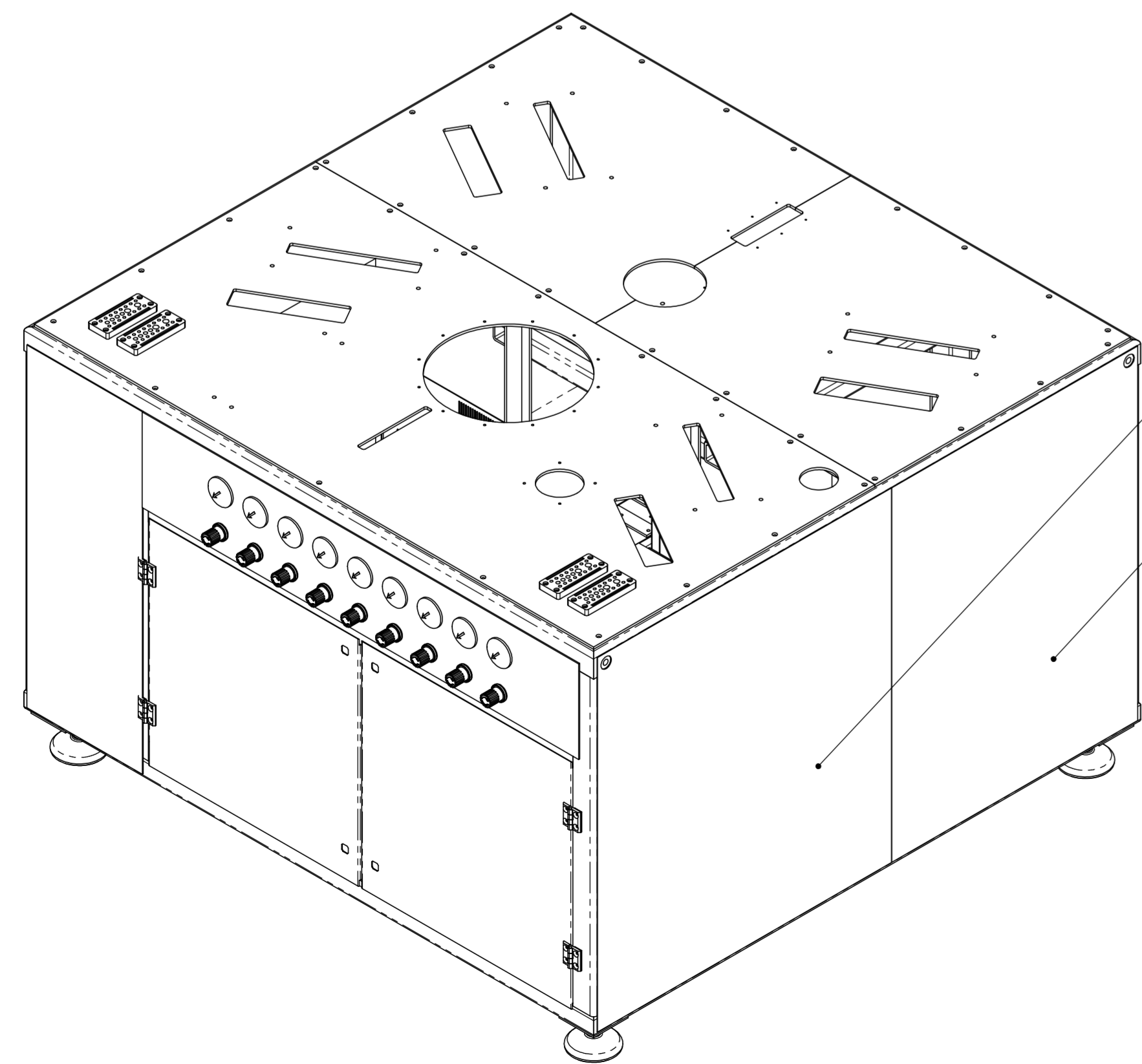
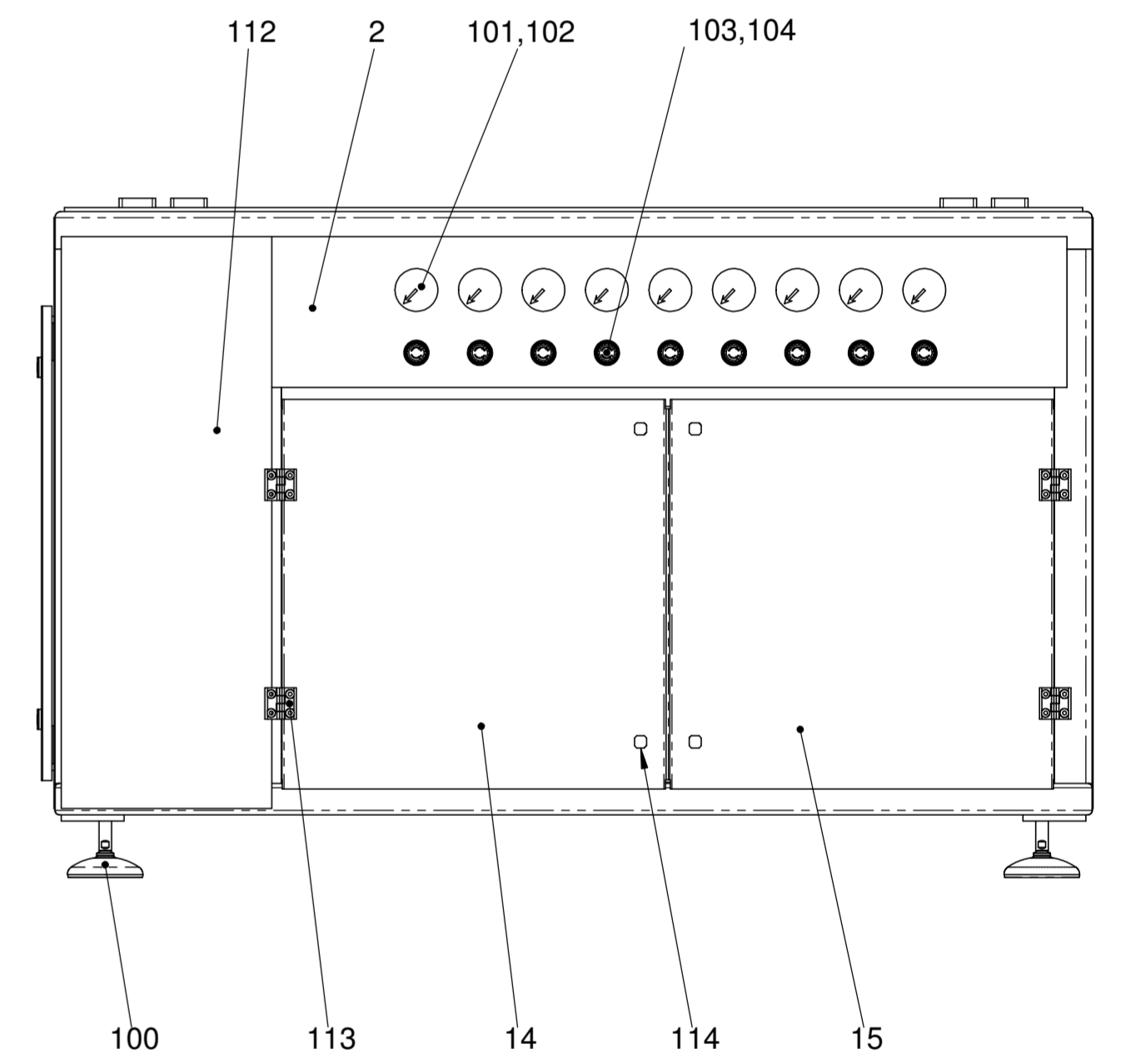
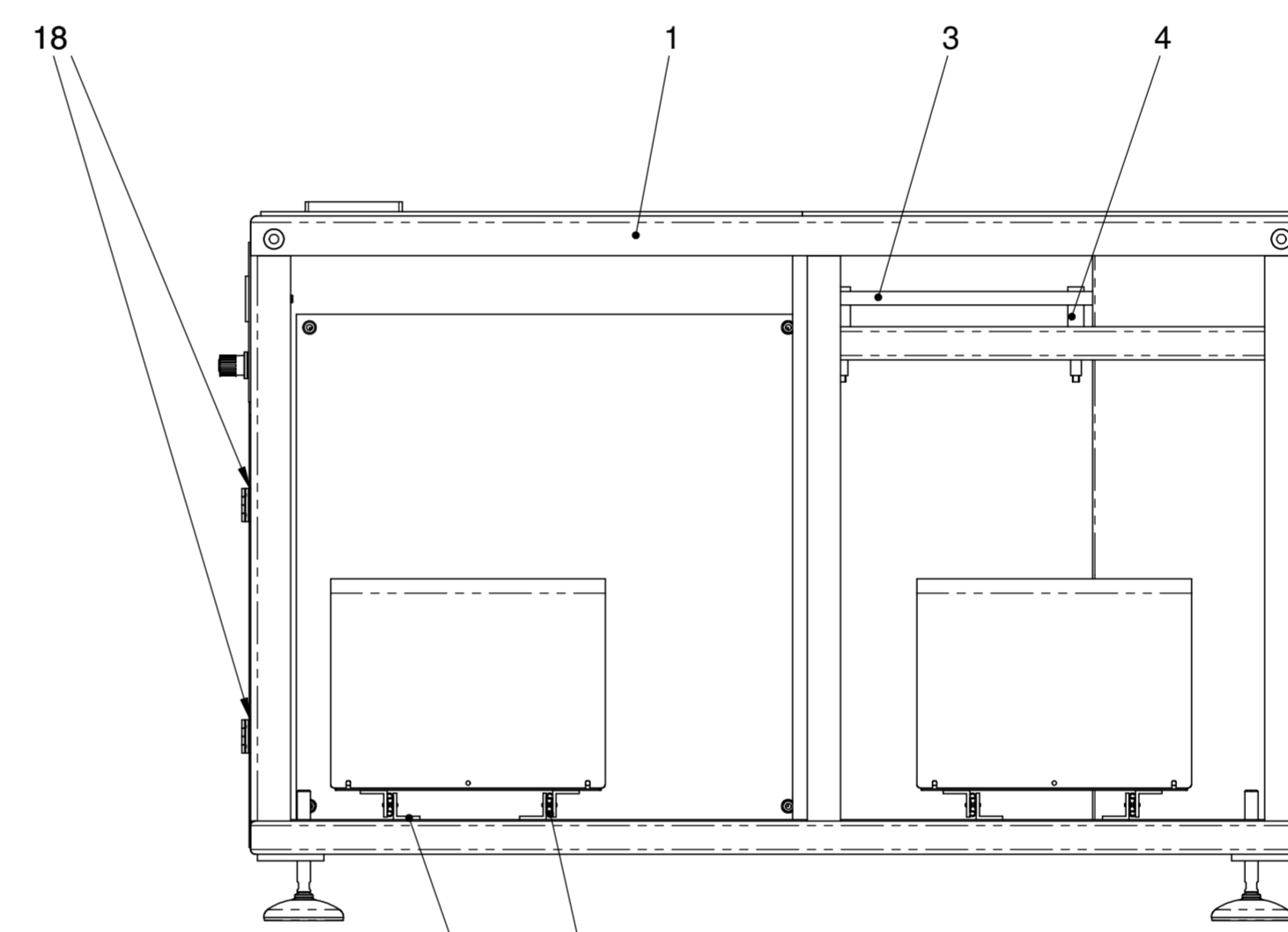
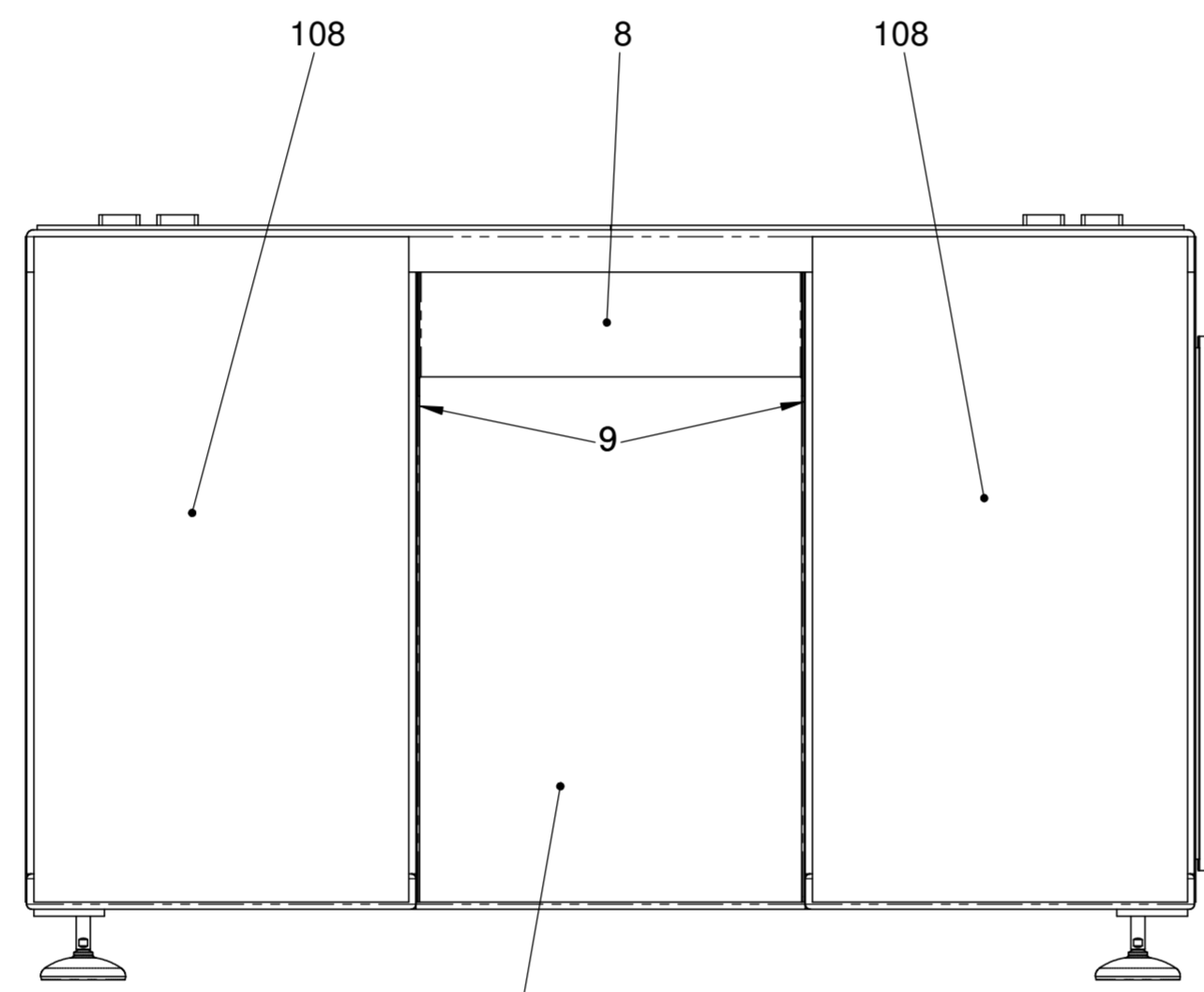
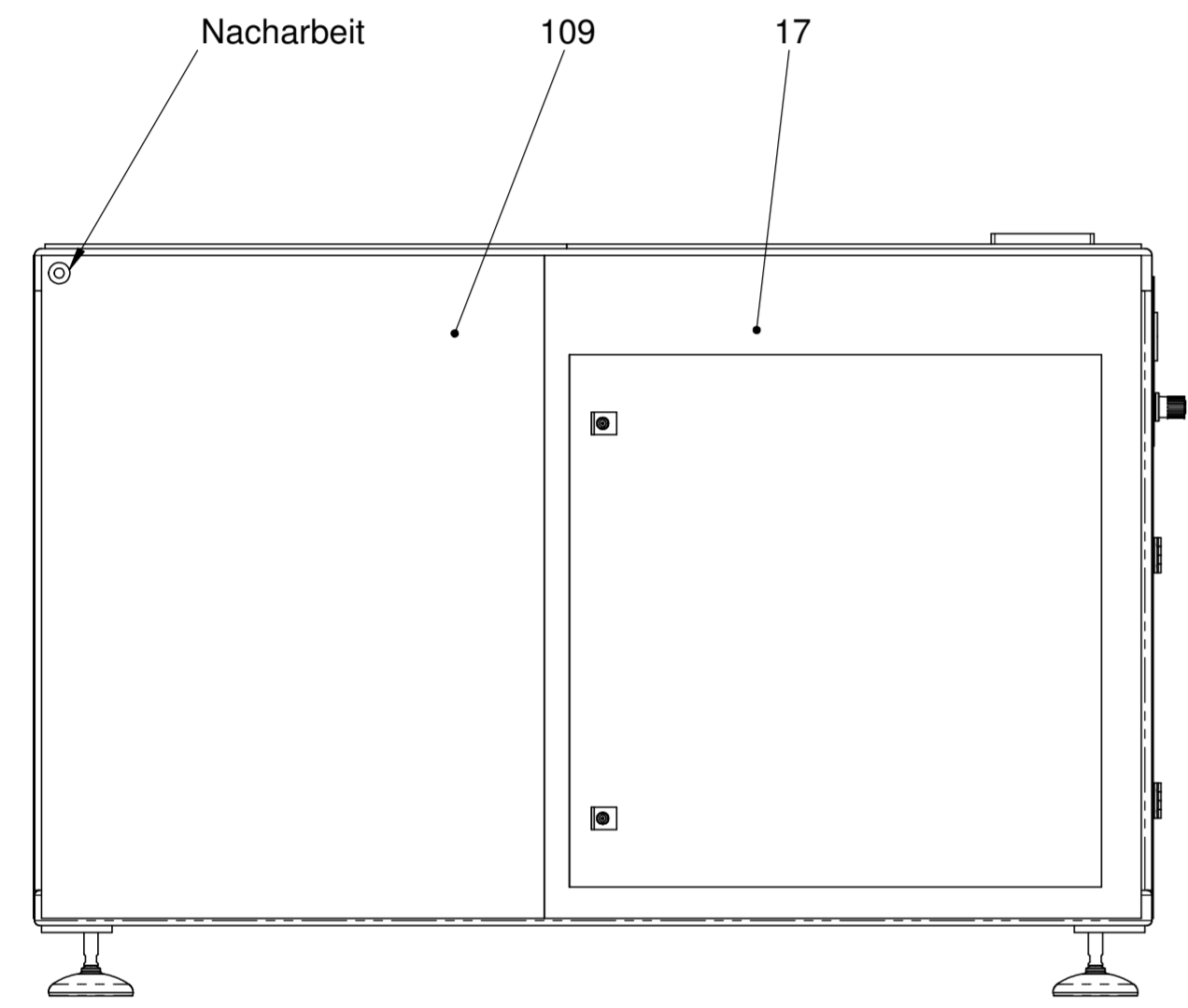
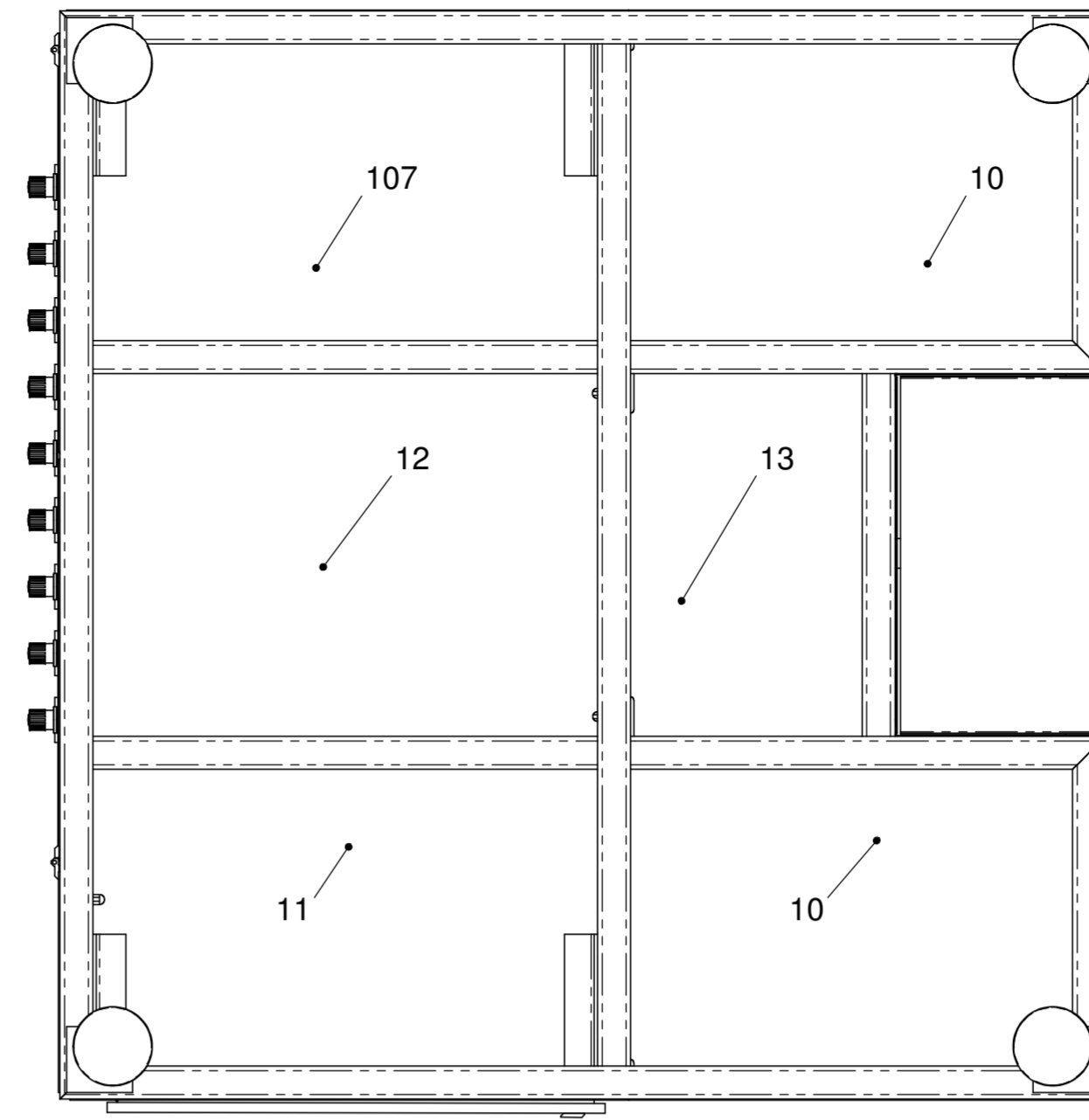
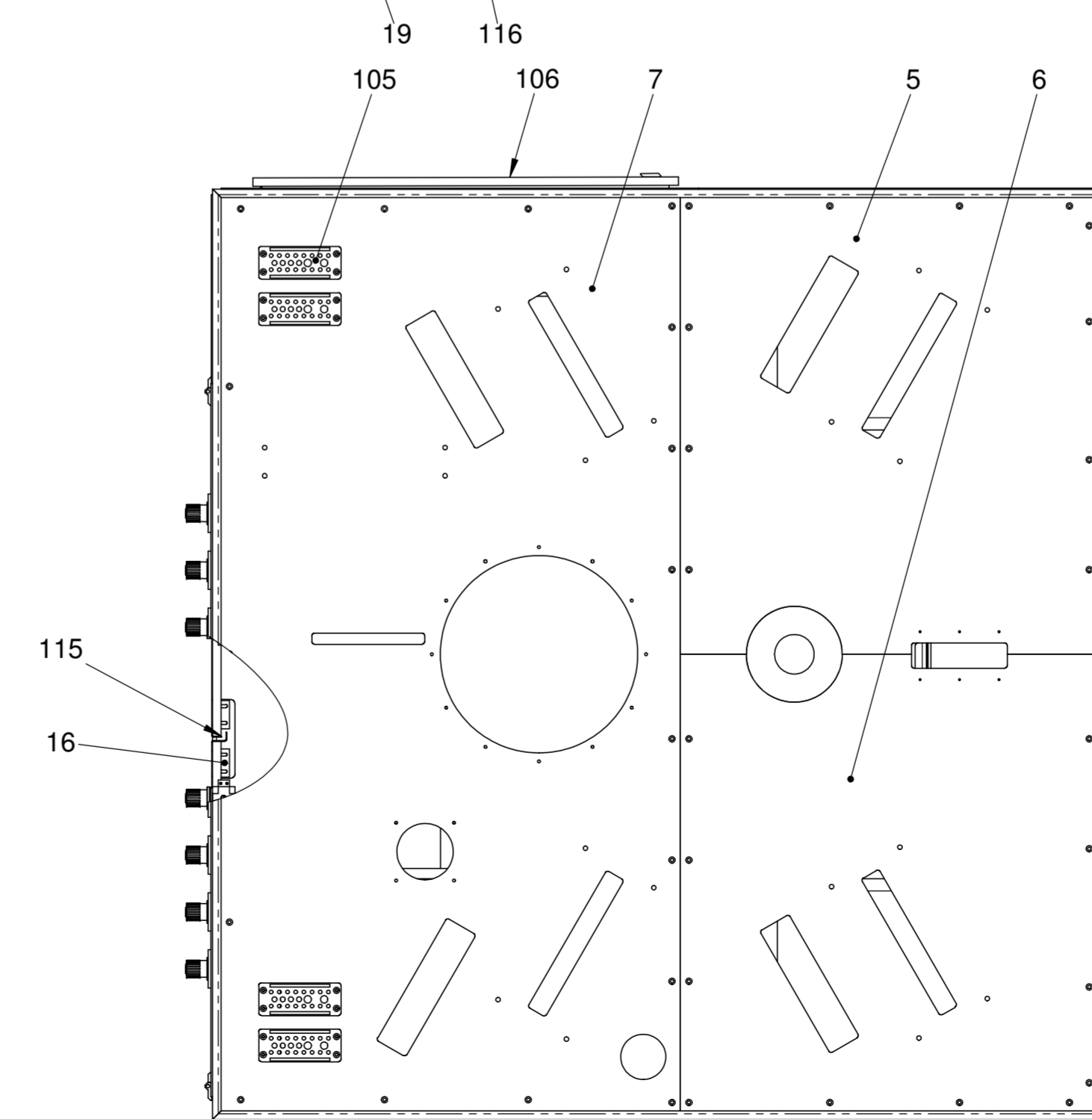


S:\Zapfenmaschinen\Projekte in Arbeit\KAO\_77\_26141880\_Maschinenunterbau\_77\_26141880



111  
110  
109



<small>Kanten gebrochen 0,3 x 45° Allg. Toleranz ISO 2768-mK</small>	<small>Oberfläche:</small>	<small>Gezeichnet:</small> TM 08.11.2013	<small>Werkstoff:</small>	<small>Masstab:</small>
		<small>Geprüft:</small>	<small>Masse:</small> 403,52 Kg	<small>1:10</small>
		<small>Gültig ab:</small> 77-26	<small>Dimension:</small>	<b>Maschinenunterbau</b>
			<small>Bemerkung:</small>	<b>MZ_1_41680</b>